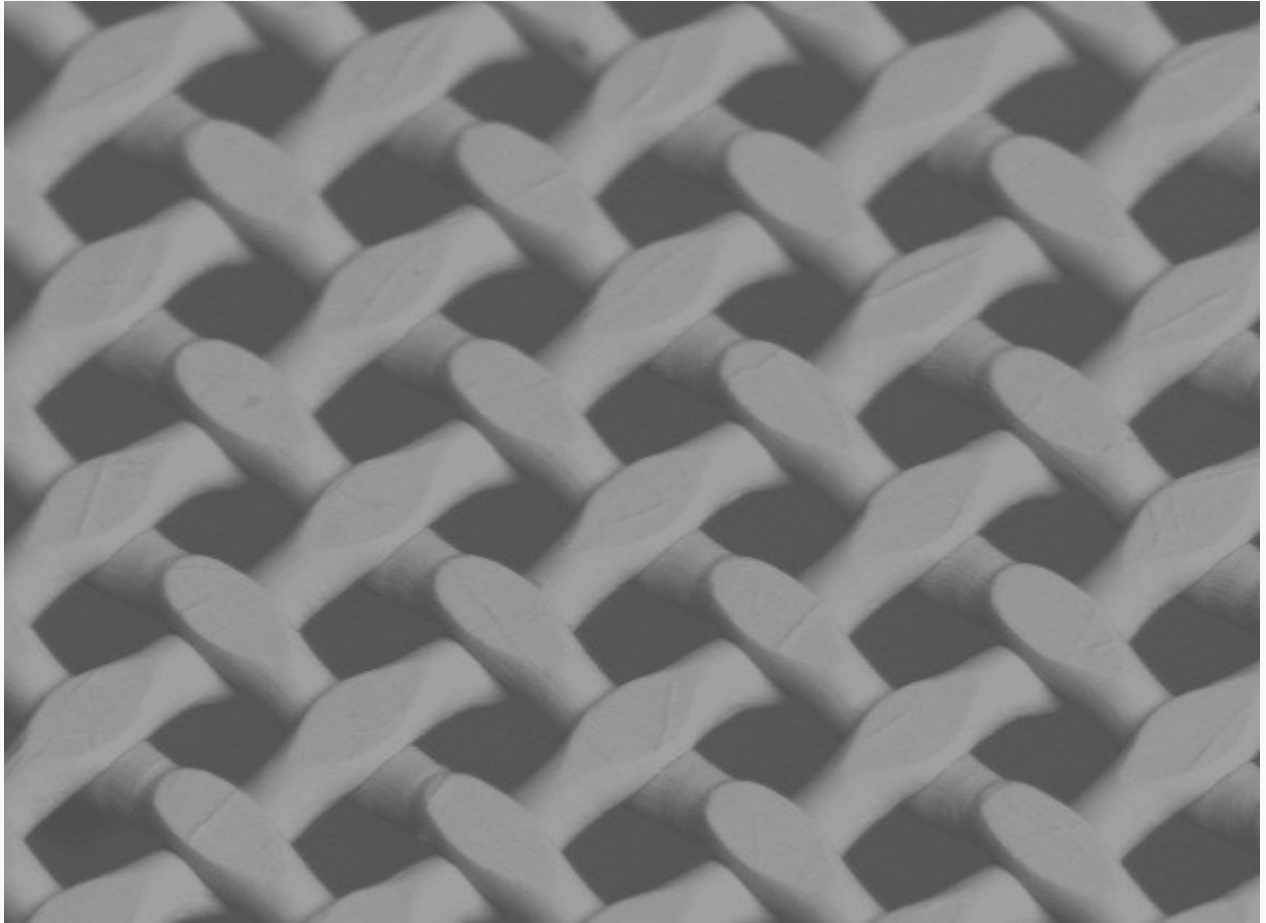


HSD360-25

Tensile strength of Supermesh HS-D is over 3 times greater than BS-Standard. Produces more stable and dimensionally accurate prints. It also has an expected longevity of 2X-3X of conventional meshes. Screen Printing technology potential will be further enhanced.

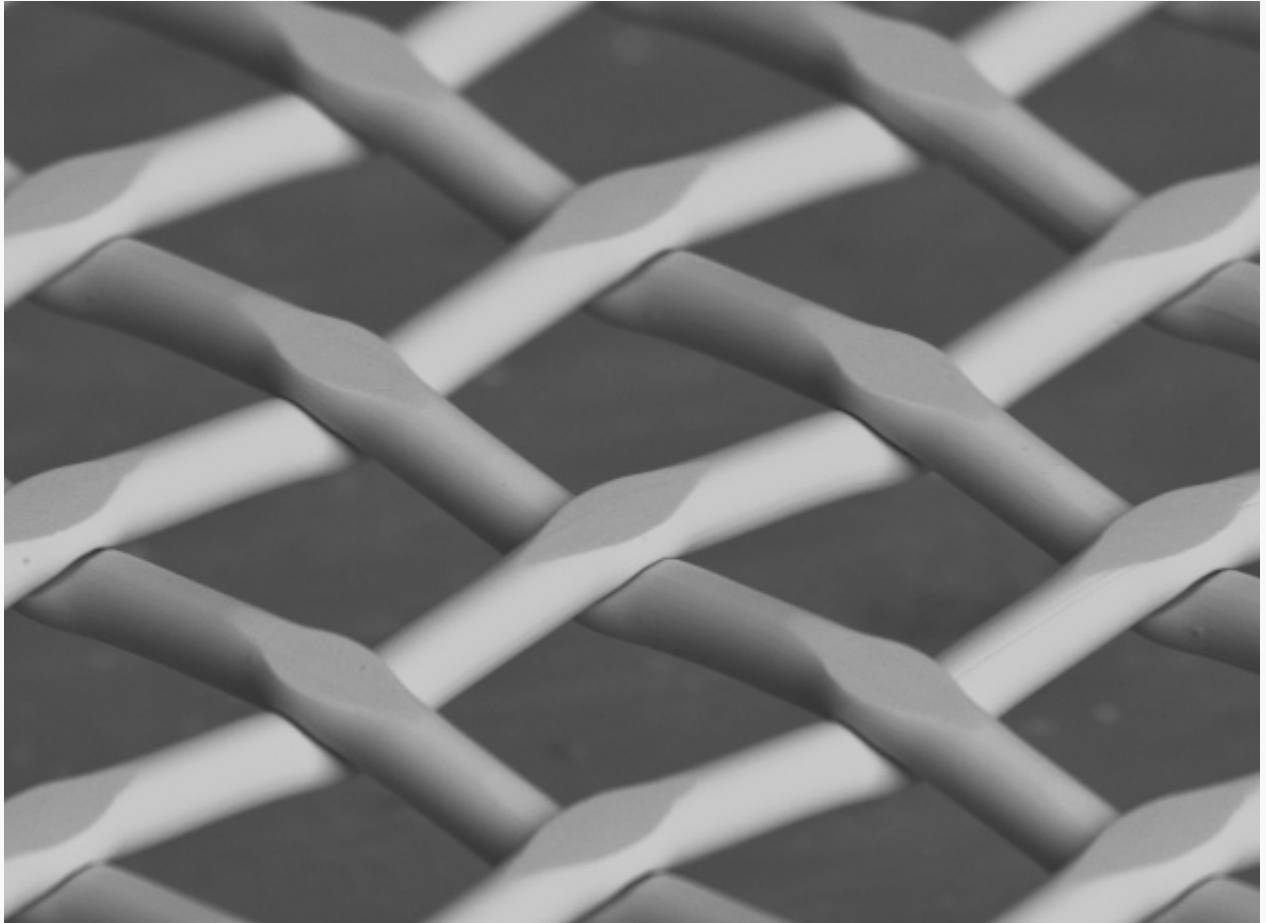


MS730-13 CL15

MS-Hardmesh is woven with 30% higher tensile strength wires than BS-Standard to meet Screen Printing demands such as high dimensional accuracy and screen mask longevity.

We were successful in developing 640 or 730 mesh, which are mainly used in MLCC industries.

It is also appropriate for fine line printing and used for drawing 30 micron electrode lines in Touch Panel application.



SHS360-16 CAL 20

SHS Series: In this range of products, the usage of stainless steel wires of much higher strength than BS and low elongation, results in woven meshes with a larger percentage of open area. In the range of 60%, the meshes are suitable to facilitate the transfer of thicker pastes. Applications like Photovoltaic Cell Metallization by screen printing make extensive use of this type of fabrics.