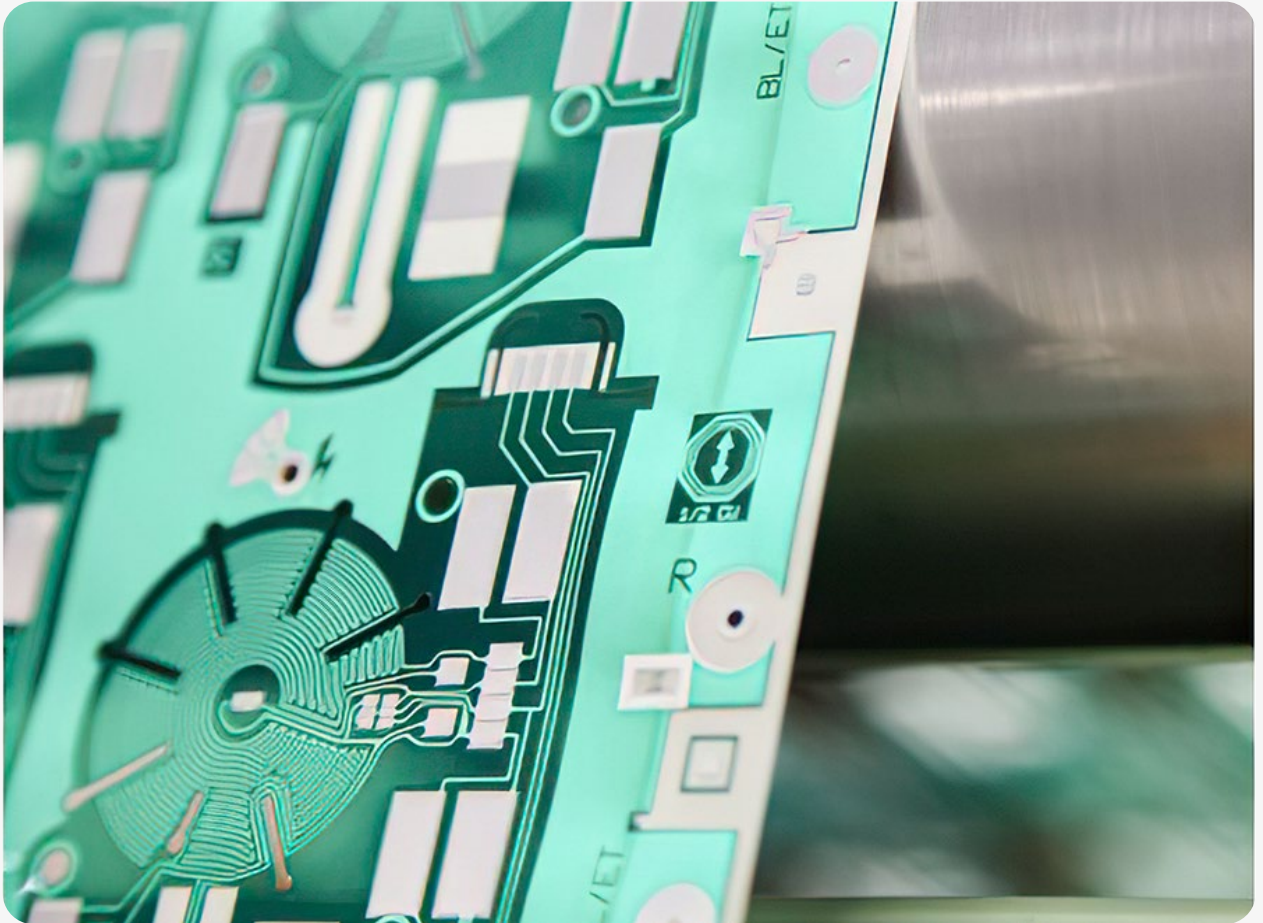




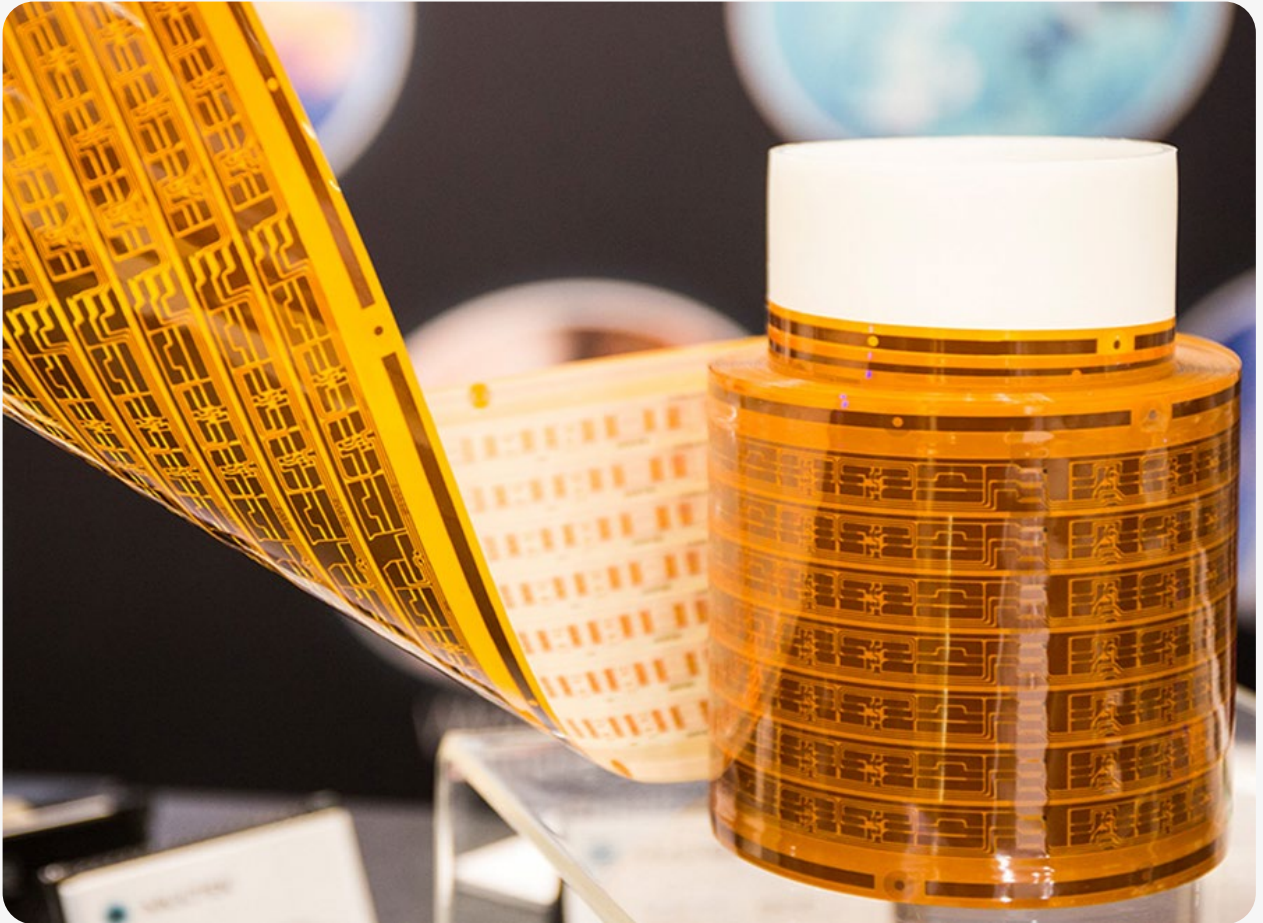
Sheldahl Contact Us

If you are interested in developing something new and would like to know more about our material capabilities, contact us! Together, we can take the ordinary to the extraordinary.



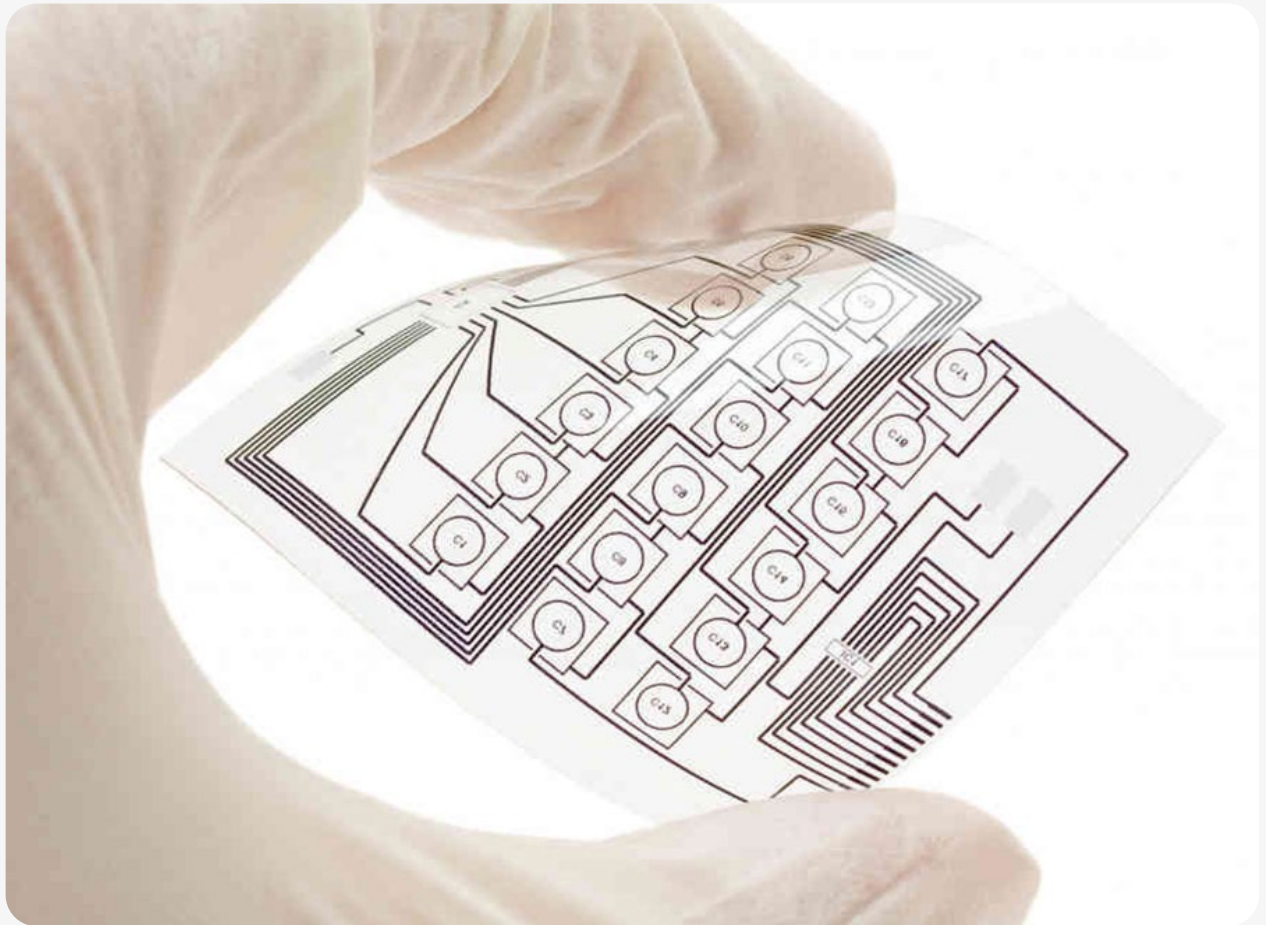
Flexible Printed Circuits

Sheldahl Flexible Technologies provides flexible circuits, printed electronics and several options for engineered materials all of which are produced primarily using roll to roll equipment.



Printed Electronics

We have been combining film types, thicknesses, double-sided printing, ink types, and finishing options to produce your desired functionality.



Flexible Hybrid Electronics

Our Flexible Hybrid Electronics are a great resource and solution for solving your designs' space, weight and shape limitations.



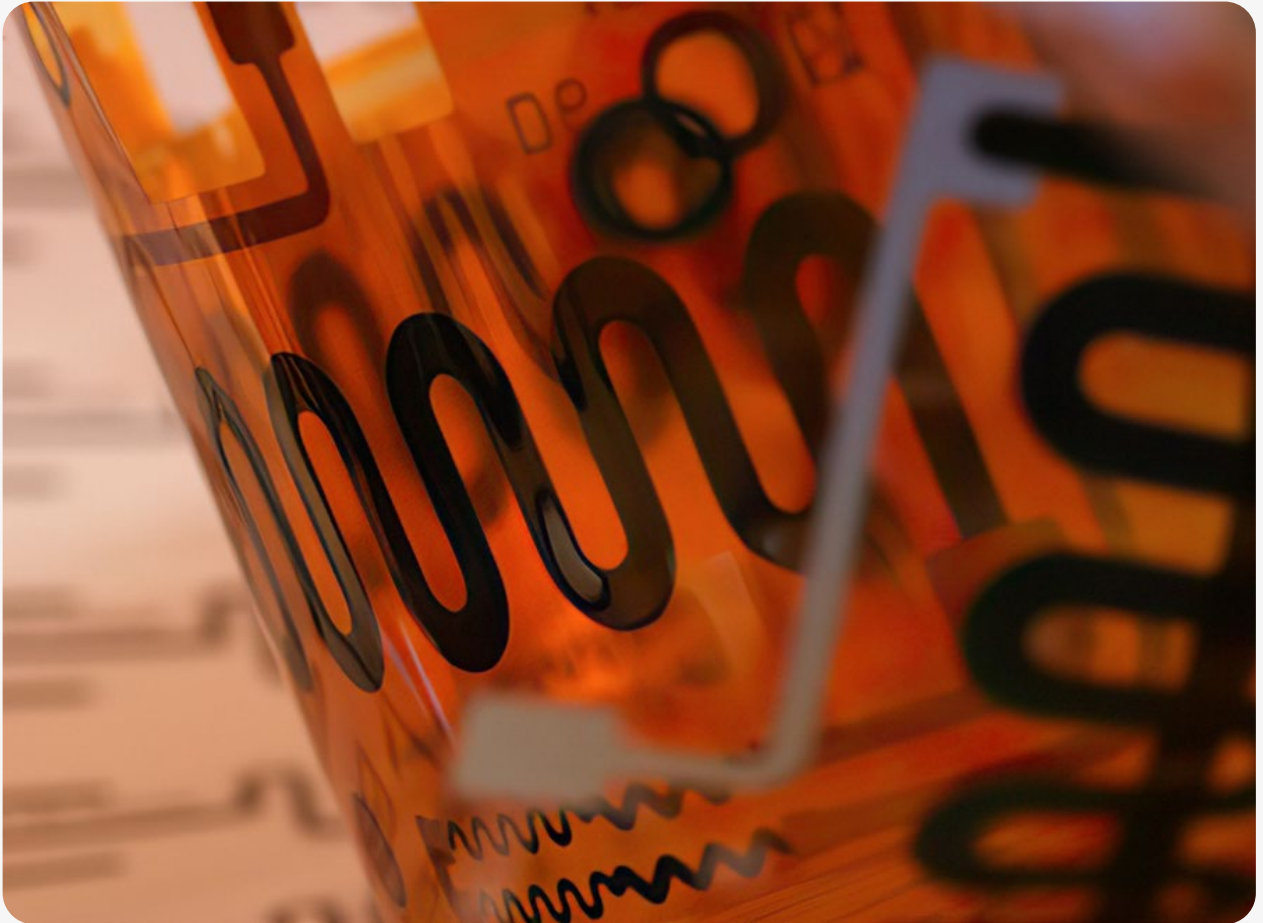
Printed Electronic Console Application

The interior of an automotive vehicle has transitioned from electromechanical switches to touch sensor technology.



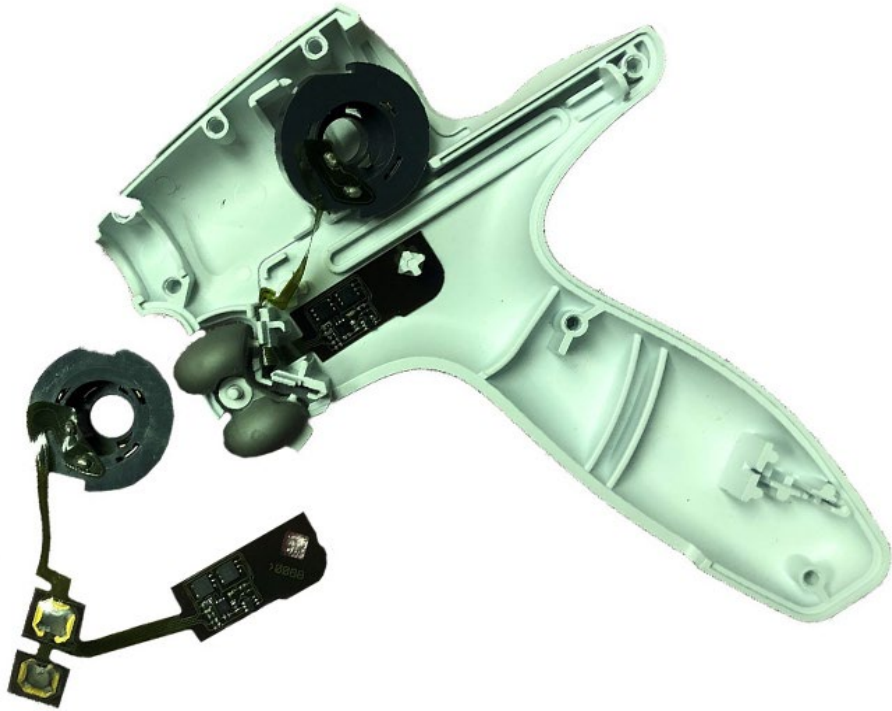
Smart Packaging

We combine the need for conformability, sensing, power, and wireless connectivity to track and monitor medical and pharmaceutical products.



Heaters

Flexible Circuitry can provide the optimal design solutions for applications where space is limited, and uniform heating is desired.



Medical Tool Application

The medical industry is developing less invasive medical devices using smaller, thinner, and longer precision disposable tools.



Wearables – Medical and Consumer

Flexible Circuits can deliver the versatility and durability that wearable devices need to withstand any environment. The medical industry is becoming more remote, allowing for home and distance care.



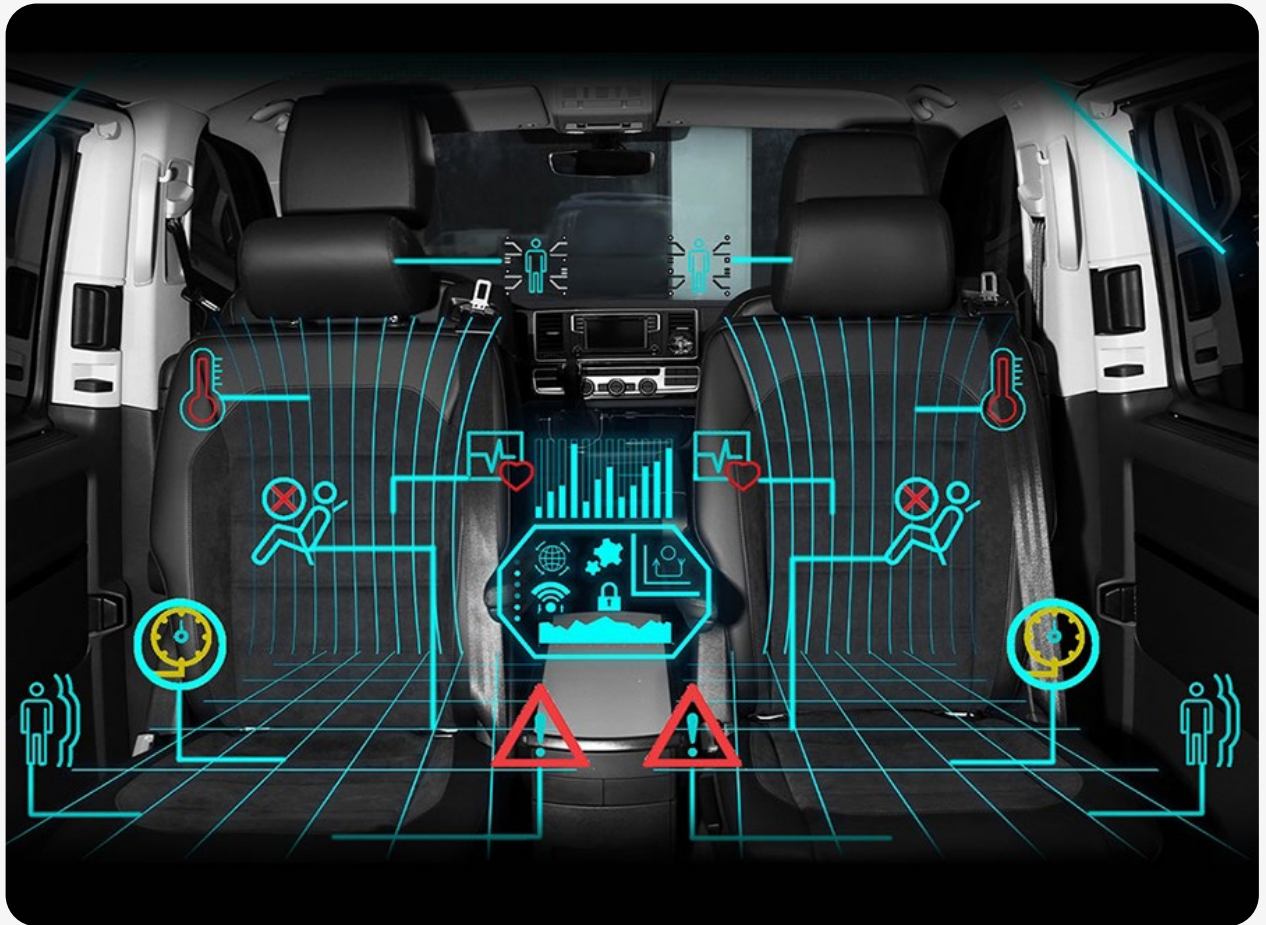
Human Machine Interface (HMI)

Human Machine Interface is a daily part of our lives. First only developed for business applications, now elevated to more consumer product families, making the experience a part of your every day.



Battery Management

Monitoring the battery's state and health is a challenge. This requires a flexible and intelligent harness to interconnect to the individual cells, adapting to the needs of the battery pack.



Sensors

Flexible circuits provide the ideal sensor technology for occupancy & biometric sensing. As an industry leader commented, the Vehicle seat is the ideal wearable device making flexible circuits ideal.



Specialty Vacuum Deposited Materials Aerospace & Defense

Sheldahl's heritage as a material supplier spans more than 65 years, from satellites, deployment vehicles & including the Mars Rover. Sheldahl's Red Book serves as a reference guide for the industry.